

CO SERIES

THREADED CENTRIFUGAL PUMPS WITH OPEN IMPELLER

These pumps combine the advantages of an open impeller with those of the AISI 316 stainless steel construction, which is particularly suited for handling moderately aggressive liquids with suspended solids.

- ❑ **ALL COMPONENTS IN CONTACT WITH PUMPED LIQUID ARE MADE OF AISI 316L STAINLESS STEEL**
- ❑ **MECHANICAL SEAL MADE OF SILICON CARBIDE/SILICON CARBIDE/FPM IN THE "K" VERSION**



APPLICATIONS

- Washing and surface treatment of metal parts.
- Washing of foodstuffs, produce, fish and shellfish.
- Oil and cleaner circulation systems.
- Machine tool cooling fluid circulation systems.
- Commercial dishwashers.
- Industrial washing machines.

SPECIFICATIONS

- **Open impeller handles solids up to 20 mm in diameter (10 mm for CO350 series pumps).**
- **Delivery up to 900 l/min (54m³/h).**
- **Head up to 24 m.**
- **Maximum operating pressure: 8 bar.**
- **Continuous duty.**
- **Temperature of pumped liquid: -10°C to +110°C.**
- Enclosed motor with external ventilation and aluminium alloy finned casing.
- Versions:
 - **Single-phase** 220-240 V 50 Hz, permanently connected capacitor and built-in automatic reset overload protection up to 1,5 kW (except for 2,2 kW version).
 - **Three-phase** 220-240/380-415 V 50 Hz, overload protection to be provided by user.
- **Power up to 3 kW.**
- **Class F Insulation.**
- **IP 55 protection.**

TABLE OF MATERIALS

| PART | MATERIAL |
|--|--|
| Pump body, Flange, Seal-housing disk, Impeller | STAINLESS STEEL (AISI 316L - DIN 1.4404) |
| Shaft extension, Fill and drain plugs | STAINLESS STEEL (AISI 316 - DIN 1.4401) |
| Standard mechanical seal | CARBON/CERAMIC/FPM |
| "K" version mechanical seal | SILICON CARBIDE/SILICON CARBIDE/FPM |
| O-rings seals | FPM |

* Bare shaft version available
* 2 and 4 poles motor available

CO350 SERIES HYDRAULIC PERFORMANCE TABLE AT 2850 rpm 50 Hz

| PUMP TYPE | RATED POWER | | Q = DELIVERY | | | | | | | | | | | | | | | | | | |
|--------------|-------------|------|---------------------------------------|------|------|------|------|------|------|------|------|------|------|------|------|------|------|------|------|-----|-----|
| | | | l/min | 0 | 100 | 120 | 160 | 200 | 240 | 280 | 300 | 350 | 375 | 400 | 450 | 500 | 600 | 650 | 700 | 800 | 900 |
| | | | m ³ /h | 0 | 6 | 7.2 | 9.6 | 12 | 14.4 | 16.8 | 18 | 21 | 22.5 | 24 | 27 | 30 | 36 | 39 | 42 | 48 | 54 |
| kW | | HP | H = TOTAL HEAD METERS COLUMN OF WATER | | | | | | | | | | | | | | | | | | |
| CO(M) 350/03 | 0.37 | 0.5 | 9.5 | 6.8 | 6.3 | 5.5 | 4.8 | 4.1 | 3.4 | 3.0 | | | | | | | | | | | |
| CO(M) 350/05 | 0.55 | 0.75 | 12.0 | 9.2 | 8.8 | 7.9 | 7.1 | 6.3 | 5.5 | 5.1 | 4.0 | | | | | | | | | | |
| CO(M) 350/07 | 0.75 | 1 | 13.7 | 11.2 | 10.8 | 9.9 | 9.1 | 8.2 | 7.4 | 6.9 | 5.8 | 5.3 | | | | | | | | | |
| CO(M) 350/09 | 0.9 | 1.2 | 15.7 | 12.7 | 12.2 | 11.3 | 10.5 | 9.6 | 8.8 | 8.3 | 7.2 | 6.6 | 5.9 | | | | | | | | |
| CO(M) 350/11 | 1.1 | 0.5 | 17.3 | 14.3 | 13.8 | 12.9 | 12.0 | 11.2 | 10.5 | 10.1 | 9.1 | 8.6 | 8.0 | 6.8 | | | | | | | |
| CO(M) 350/15 | 1.5 | 2 | 20.3 | 16.9 | 16.4 | 15.3 | 14.4 | 13.5 | 12.7 | 12.2 | 11.2 | 10.6 | 10.0 | 8.7 | 7.2 | | | | | | |
| CO(M) 500/15 | 1.5 | 2 | 16.0 | | | | 13.4 | 12.8 | 12.3 | 12.0 | 11.3 | 10.9 | 10.5 | 9.8 | 9.0 | 7.4 | 6.6 | 5.8 | | | |
| CO(M) 500/22 | 2.2 | 3 | 19.6 | | | | 17.3 | 16.7 | 16.2 | 15.9 | 15.2 | 14.9 | 14.5 | 13.7 | 13.0 | 11.3 | 10.4 | 9.6 | 7.7 | | |
| CO 500/30 | 3 | 4 | 24.1 | | | | 20.9 | 20.3 | 19.3 | 19.3 | 18.5 | 18.1 | 17.7 | 16.9 | 16.0 | 14.3 | 13.5 | 12.6 | 10.8 | 9.0 | |

co-2p50_b_th

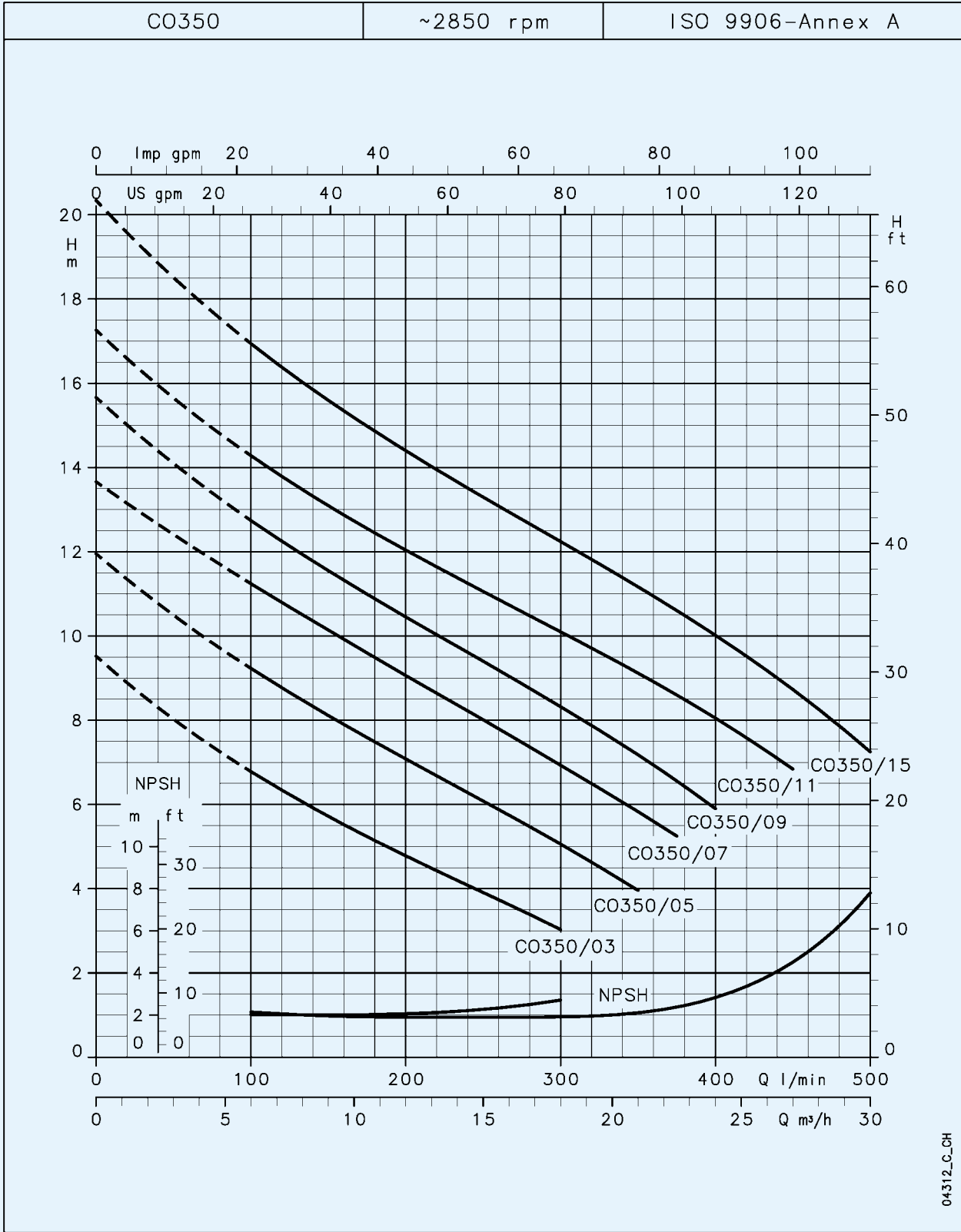
| PUMP TYPE | INPUT POWER* | INPUT CURRENT* | CAPACITOR | | | |
|-----------|--------------|----------------|-----------|--------------|----------------|------------|
| | | | | SINGLE-PHASE | | |
| | | | | kW | 220-240 V A | μF / 450 V |
| COM350/03 | 0.63 | 2.82 | 14 | | | |
| COM350/05 | 0.88 | 4.25 | 16 | | | |
| COM350/07 | 1.02 | 4.67 | 20 | | | |
| COM350/09 | 1.21 | 5.46 | 25 | | | |
| COM350/11 | 1.75 | 7.85 | 30 | | | |
| COM350/15 | 2.04 | 9.21 | 40 | | | |
| COM500/15 | 2.02 | 9.12 | 40 | | | |
| COM500/22 | 2.71 | 12.1 | 50 | | | |
| - | - | - | - | | | |

* Maximum value in specified range

| PUMP TYPE | INPUT POWER* | INPUT CURRENT* | INPUT CURRENT* | | | |
|-----------|--------------|----------------|----------------|-------------|----------------|----------------|
| | | | | THREE-PHASE | | |
| | | | | kW | 220-240 V A | 380-415 V A |
| CO 350/03 | 0.64 | 2.53 | 1.46 | | | |
| CO 350/05 | 0.79 | 2.7 | 1.56 | | | |
| CO 350/07 | 1 | 3.57 | 2.06 | | | |
| CO 350/09 | 1.13 | 4.21 | 2.43 | | | |
| CO 350/11 | 1.69 | 5.2 | 3 | | | |
| CO 350/15 | 1.98 | 6.3 | 3.64 | | | |
| CO 500/15 | 1.96 | 6.27 | 3.62 | | | |
| CO 500/22 | 2.73 | 9.06 | 5.23 | | | |
| CO 500/30 | 3.97 | 11.7 | 6.78 | | | |

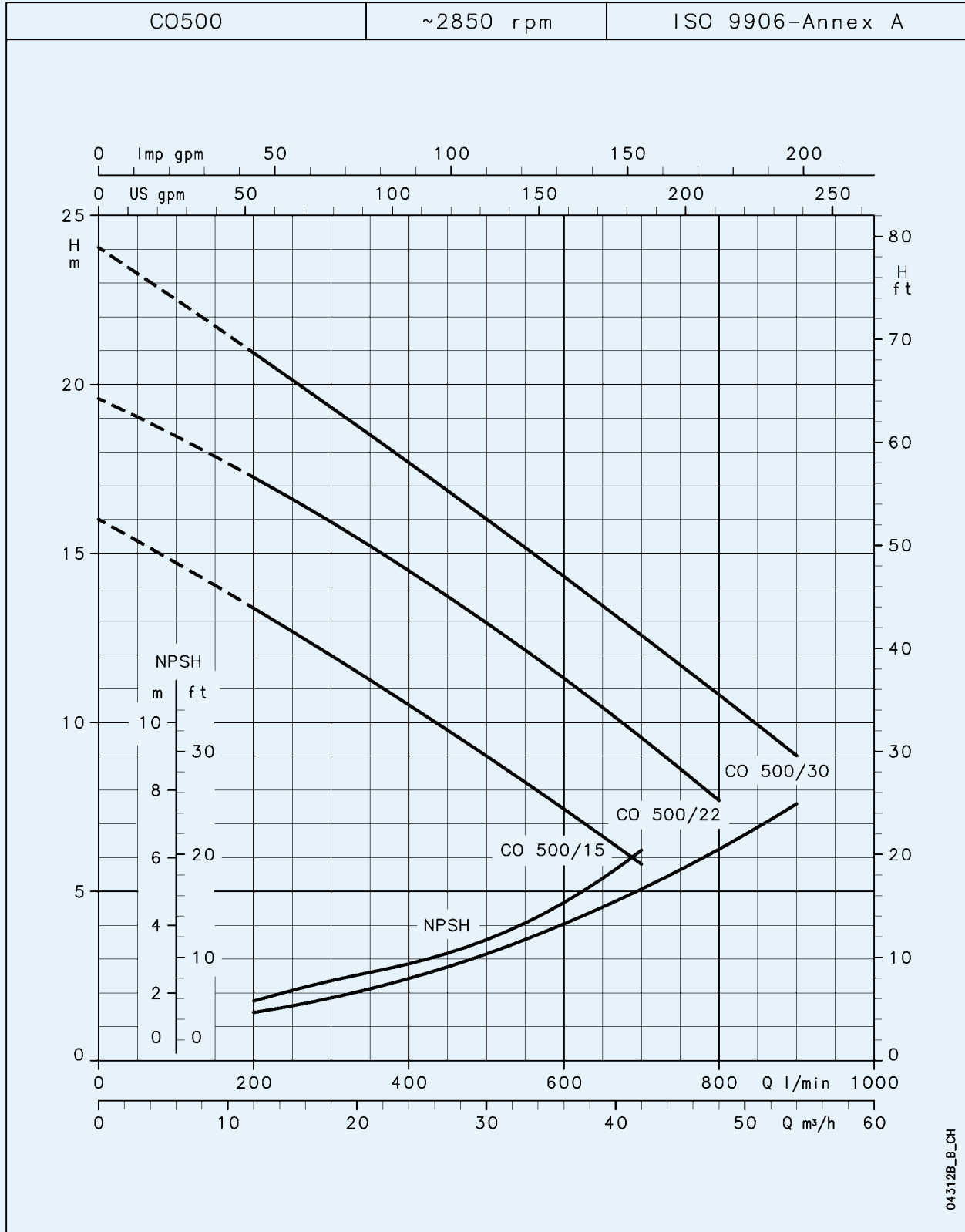
co-2p50_b_te

**CO350 SERIES
HYDRAULIC PERFORMANCE TABLE AT 2850 rpm 50 Hz**



These performances are valid for liquids with density $\rho = 1.0 \text{ kg/dm}^3$ and kinematic viscosity $\gamma = 1 \text{ mm}^2/\text{sec}$.

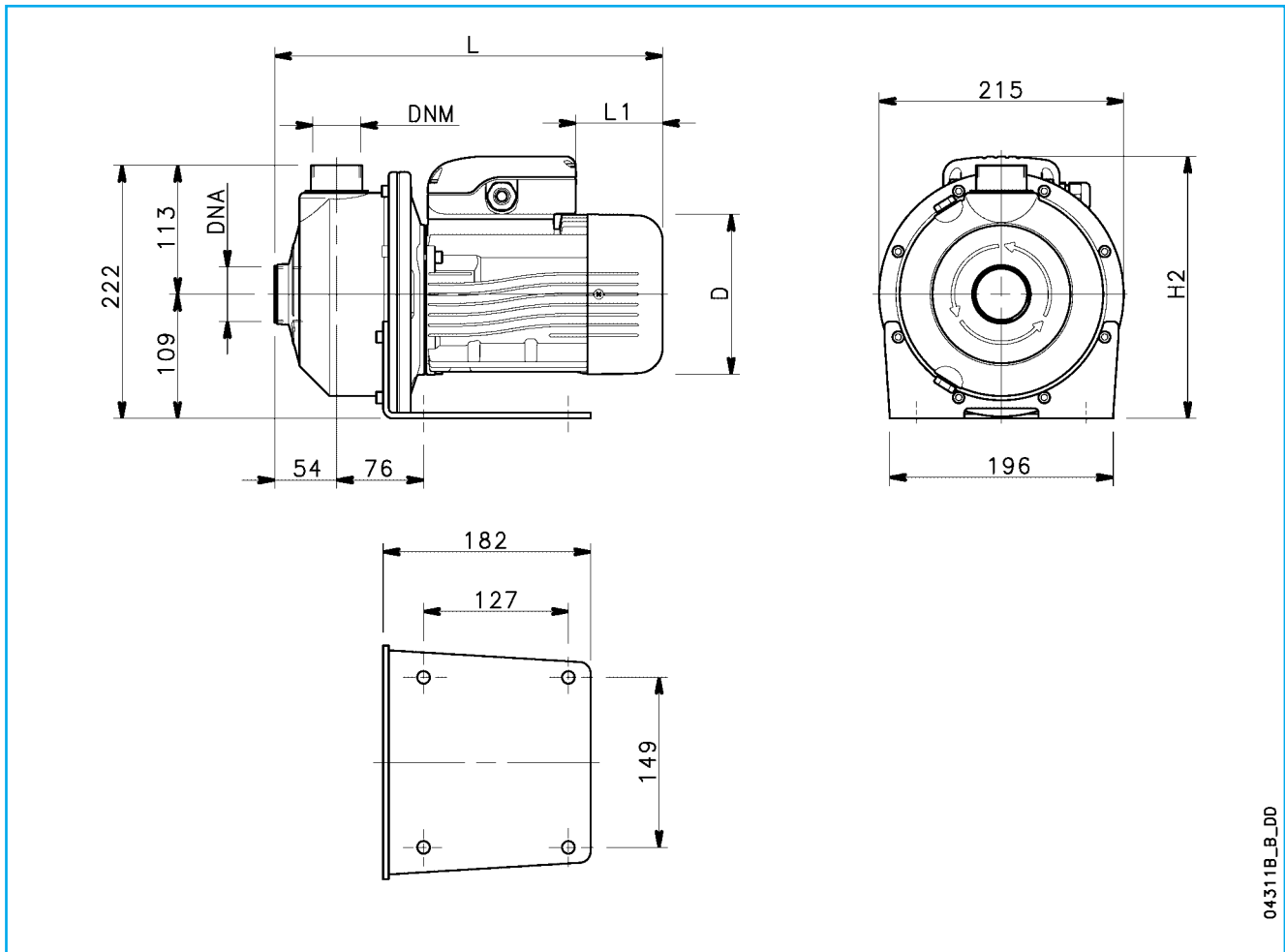
CO500 SERIES OPERATING CHARACTERISTICS AT 2850 rpm 50 Hz



These performances are valid for liquids with density $\rho = 1.0 \text{ kg/dm}^3$ and kinematic viscosity $\gamma = 1 \text{ mm}^2/\text{sec}$.

CO

DIMENSIONS AND WEIGHTS, CO SERIES



| PUMP TYPE | DIMENSIONS (mm) | | | | DNA | DNM | WEIGHT kg |
|------------|-----------------|-----|-----|-----|-------|------|--------------|
| | D | H2 | L | L1 | | | |
| COM 350/03 | 120 | 220 | 325 | 62 | Rp 1½ | Rp ¼ | 10 |
| COM 350/05 | 140 | 230 | 339 | 76 | Rp 1½ | Rp ¼ | 11.9 |
| COM 350/07 | 140 | 230 | 339 | 76 | Rp 1½ | Rp ¼ | 12.6 |
| COM 350/09 | 140 | 239 | 339 | 31 | Rp 1½ | Rp ¼ | 13.2 |
| COM 350/11 | 156 | 246 | 385 | 69 | Rp 1½ | Rp ¼ | 14.5 |
| COM 350/15 | 156 | 246 | 385 | 69 | Rp 1½ | Rp ¼ | 16.2 |
| COM 500/15 | 156 | 246 | 385 | 69 | Rp 2 | Rp ½ | 16.2 |
| COM 500/22 | 176 | 230 | 416 | 114 | Rp 2 | Rp ½ | 17.8 |
| CO 350/03 | 120 | 220 | 325 | 62 | Rp 1½ | Rp ¼ | 10 |
| CO 350/05 | 140 | 230 | 339 | 76 | Rp 1½ | Rp ¼ | 11.9 |
| CO 350/07 | 140 | 230 | 339 | 76 | Rp 1½ | Rp ¼ | 12.6 |
| CO 350/09 | 140 | 230 | 339 | 76 | Rp 1½ | Rp ¼ | 12.2 |
| CO 350/11 | 156 | 238 | 385 | 114 | Rp 1½ | Rp ¼ | 14.5 |
| CO 350/15 | 156 | 238 | 385 | 114 | Rp 1½ | Rp ¼ | 16.2 |
| CO 500/15 | 156 | 238 | 385 | 114 | Rp 2 | Rp ½ | 16.2 |
| CO 500/22 | 156 | 238 | 385 | 114 | Rp 2 | Rp ½ | 17.8 |
| CO 500/30 | 176 | 230 | 416 | 149 | Rp 2 | Rp ½ | 22 |

co-2p50_a_td